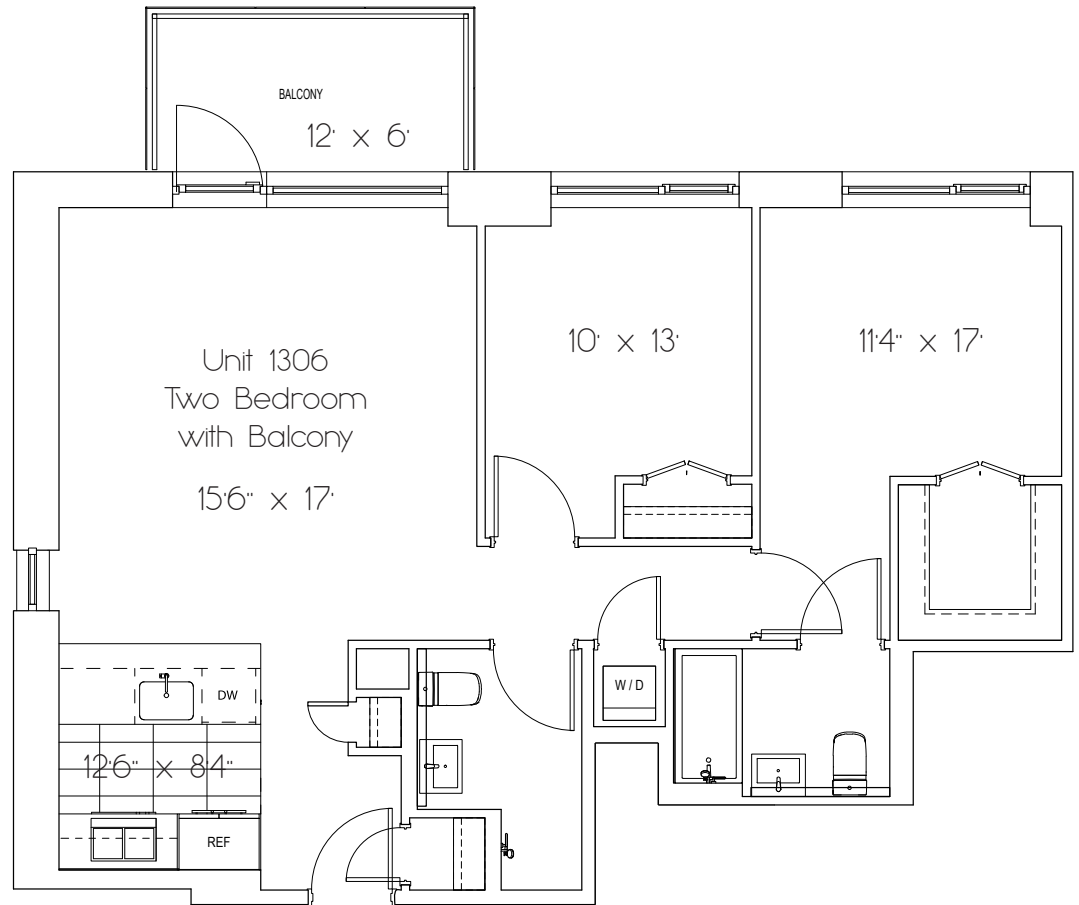
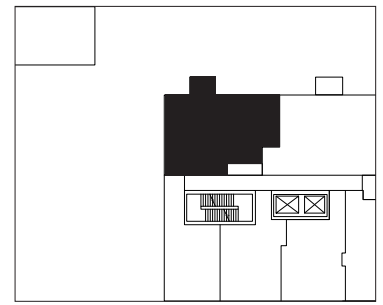




PASSIVE HOUSE
LUXURY RENTALS

1306

Two Bedroom,
Two Bathroom
with Balcony
1080.5 Sq. Ft.



All dimensions and square footages are approximate and subject to normal construction variances and tolerances. No guarantee, warranty or representation of any kind is made regarding the completeness or accuracy of descriptions or measurements (including square footage measurements), which should be independently verified. 2600 Seventh Avenue and BOND New York Real Estate expressly disclaim liability in connection therewith. This information is subject to errors, omissions, changes in price, availability or withdrawal without notice. No financial or legal advice is provided. Equal Housing Opportunity.

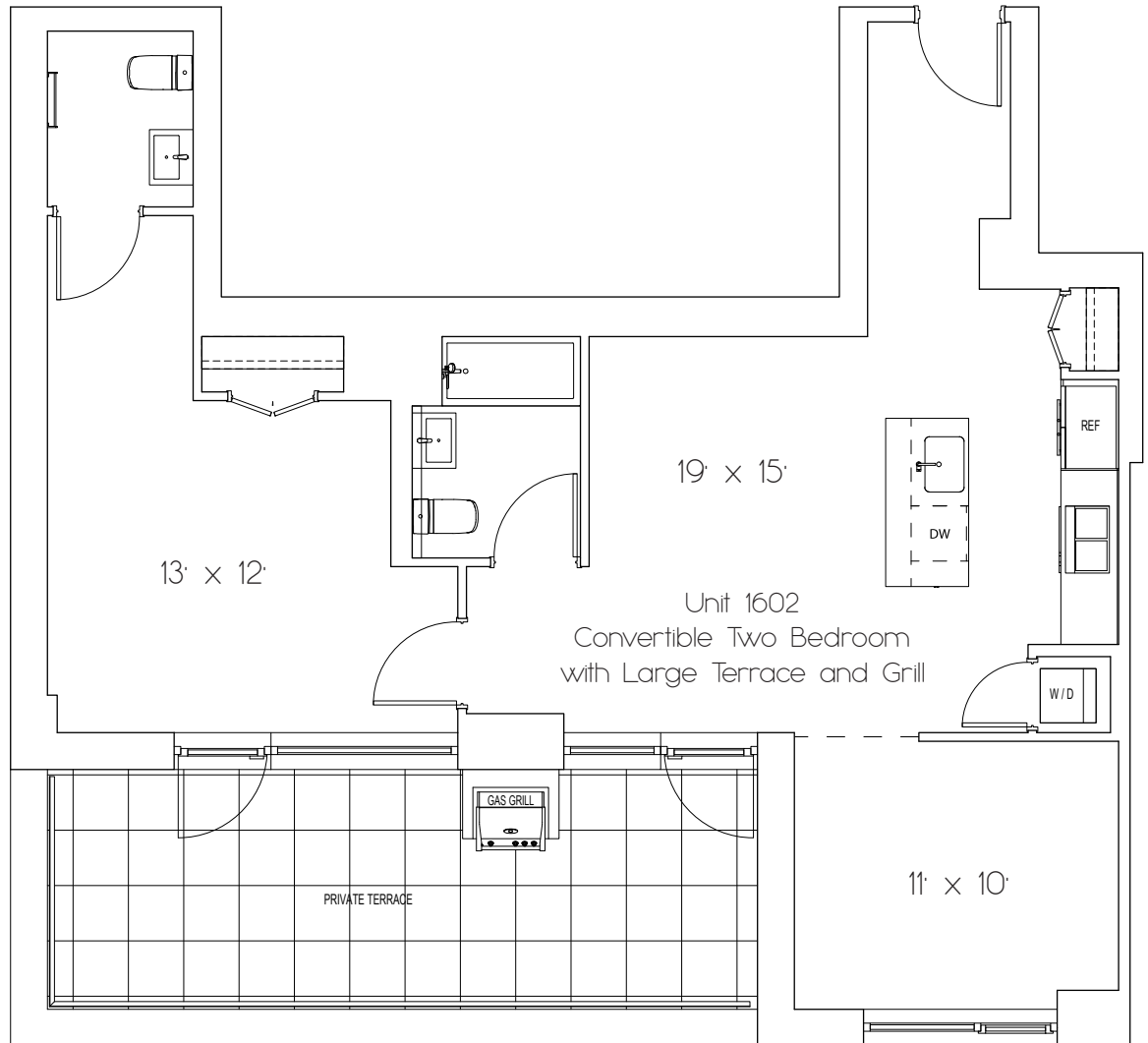
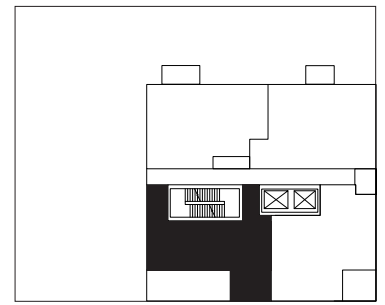




PASSIVE HOUSE
LUXURY RENTALS

1602

Convertible
Two Bedroom,
Two Bathroom
with Large Terrace
and Grill
1138 Sq. Ft.



All dimensions and square footages are approximate and subject to normal construction variances and tolerances. No guarantee, warranty or representation of any kind is made regarding the completeness or accuracy of descriptions or measurements (including square footage measurements), which should be independently verified. 2600 Seventh Avenue and BOND New York Real Estate expressly disclaim liability in connection therewith. This information is subject to errors, omissions, changes in price, availability or withdrawal without notice. No financial or legal advice is provided. Equal Housing Opportunity.

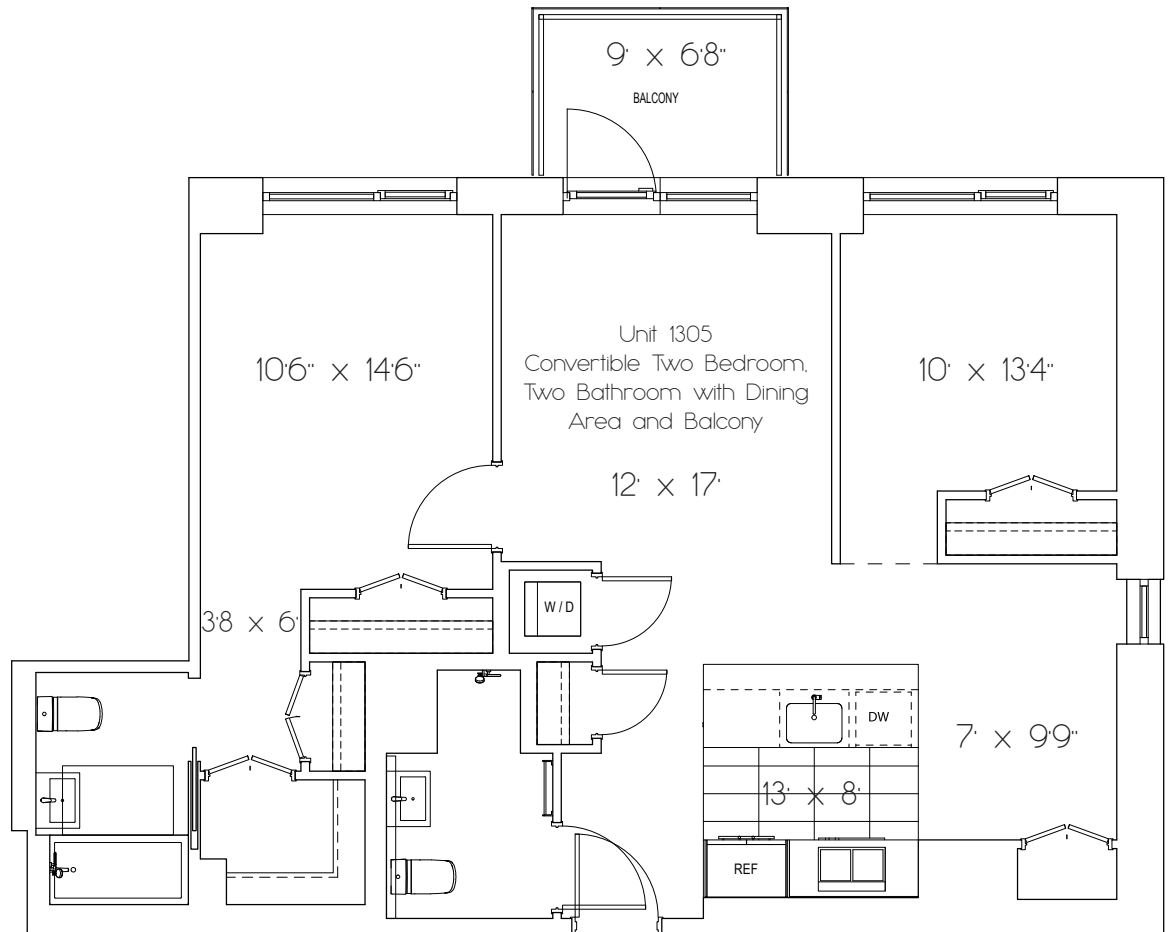
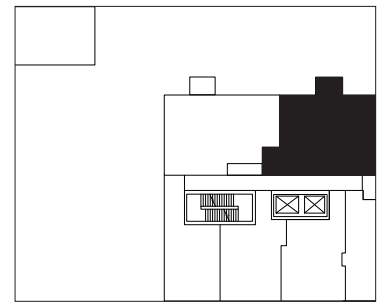




PASSIVE HOUSE
LUXURY RENTALS

1305

Convertible
Two Bedroom,
Two Bathroom
with Dining Area
and Balcony
1100.5 Sq. Ft.



All dimensions and square footages are approximate and subject to normal construction variances and tolerances. No guarantee, warranty or representation of any kind is made regarding the completeness or accuracy of descriptions or measurements (including square footage measurements), which should be independently verified. 2600 Seventh Avenue and BOND New York Real Estate expressly disclaim liability in connection therewith. This information is subject to errors, omissions, changes in price, availability or withdrawal without notice. No financial or legal advice is provided. Equal Housing Opportunity.

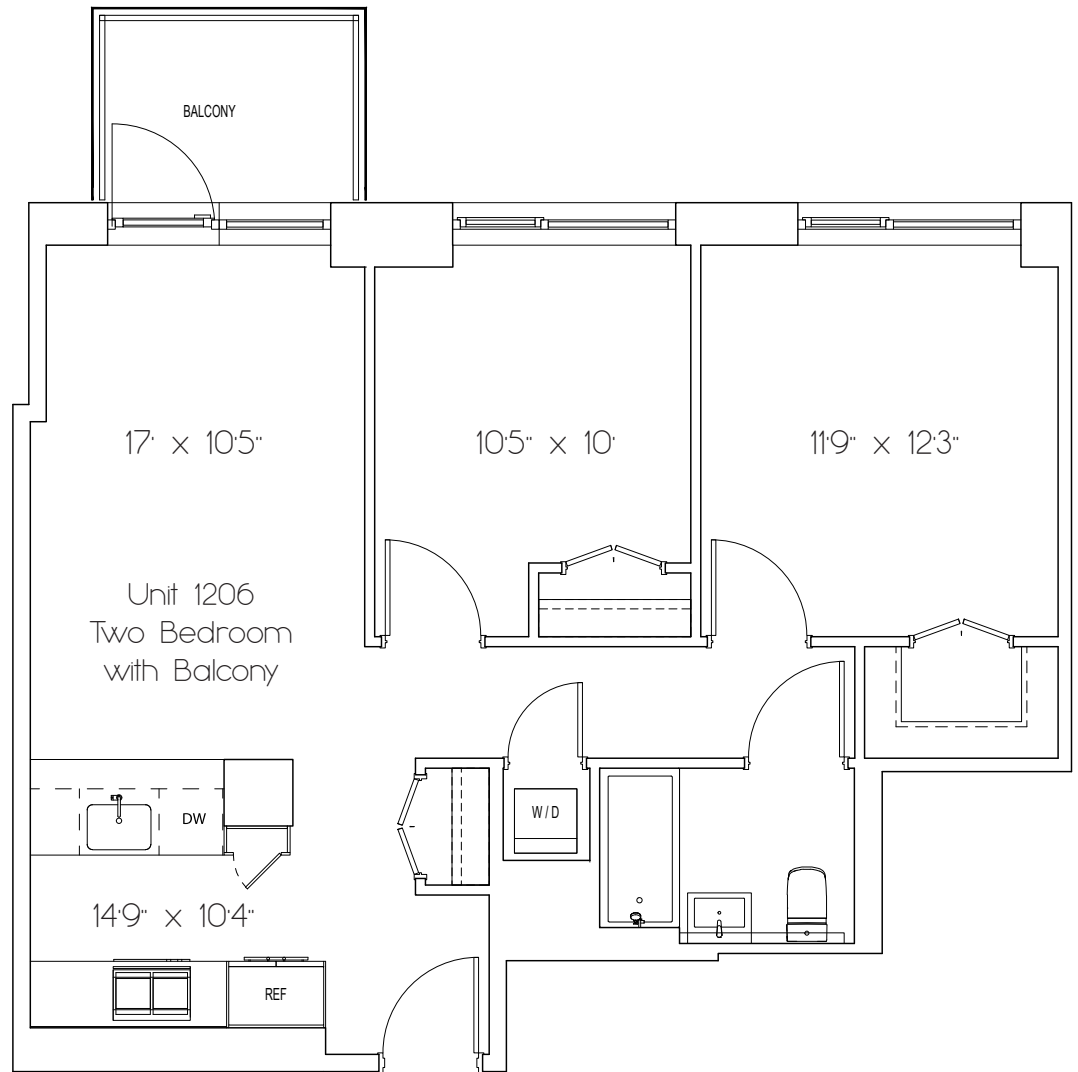
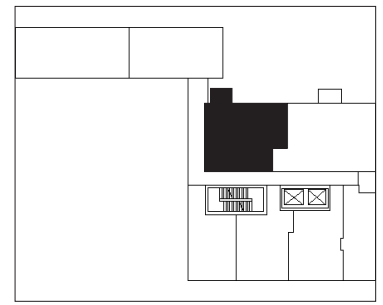




PASSIVE HOUSE
LUXURY RENTALS

1206

Two Bedroom,
One Bathroom
with Balcony
8715 Sq. Ft.



All dimensions and square footages are approximate and subject to normal construction variances and tolerances. No guarantee, warranty or representation of any kind is made regarding the completeness or accuracy of descriptions or measurements (including square footage measurements), which should be independently verified. 2600 Seventh Avenue and BOND New York Real Estate expressly disclaim liability in connection therewith. This information is subject to errors, omissions, changes in price, availability or withdrawal without notice. No financial or legal advice is provided. Equal Housing Opportunity.

